



Electronic Technologies Pvt. Ltd.,
Bangalore, India

Brief

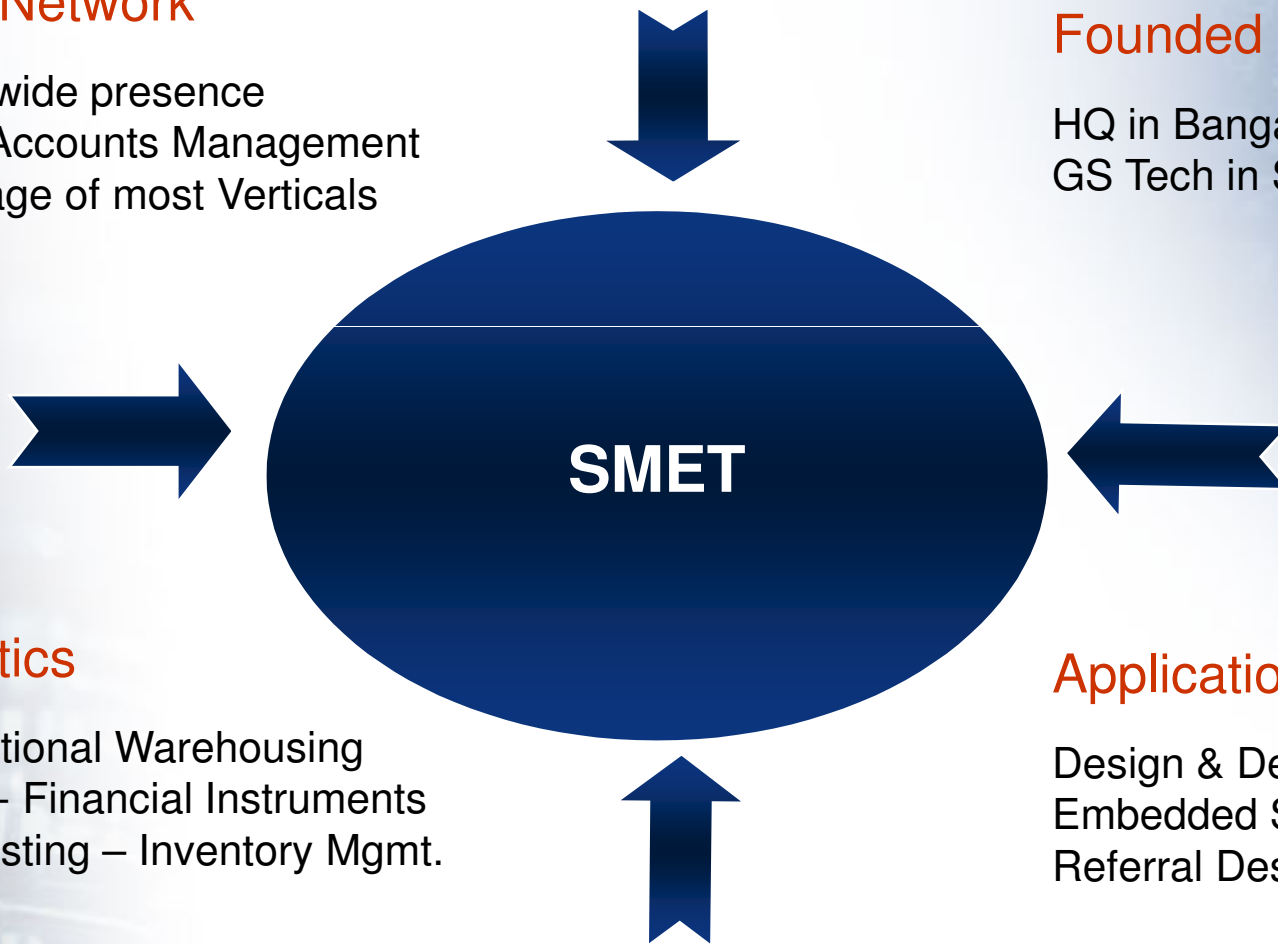
Company Profile

India Network

Nationwide presence
Major Accounts Management
Coverage of most Verticals

Founded in 1990

HQ in Bangalore, India
GS Tech in Singapore



Logistics

International Warehousing
Terms - Financial Instruments
Forecasting – Inventory Mgmt.

Application Support

Design & Development
Embedded Solutions
Referral Design

Our Values



- Confidence and Competency
- Perseverance and Respect
- Passion and Connectivity
- Commitment and Integrity

TEAM STRENGTH

• Total	–	70
• Sales & Marketing	–	30
• FAE's	–	12
• Business Processing (CSR)	–	08
• Ware-house/Logistics	-	07
• Embedded	–	08
• Admin, HR & Finance	-	05

About Management

The Management of SMET has more than 2 decades of experience in working with multinational electronic, hardware and embedded software giants like Hewlett Packard, National Semiconductors, AVX, Harris, etc & Banking sector for Finance.

Our Organization

Team Strength

- Technical Management, Application Engineering, Sales and Marketing, Business Processing functions
- International teams for Co-ordination, Reporting, Liaison with Principals

Application Support

Comprehensive in-house development lead by senior expertise in H/W & S/W

Wireless Modules

Dash board referral solution

UHF RFID Expertise

Thermal Printer interface

Solar Charge Controllers

Street Light Controls

LED Lighting Solutions

Alliances for development of Power Supply solutions with Triphase

Our Network

SM Electronic Technologies
#1790,5th main,9th cross
RPC Layout,Vijayanagar 2nd Stage
Bangalore-560040
Ph:+91-80-23301030 (5 lines)
Fax: +91-80-23387197

GS Technology Pte Ltd.,
Block 5012, Ang Mo Kio
Avenue 5,
#05-05 Techplace II,
Singapore - 569876

NEW DELHI

106 & 108,
Ansal
Classique
Tower,
Rajouri
Garden,
New Delhi-
110027

PUNE

C1/4, Saudamini
Complex, Flat
No. 204, Bhusari
Colony, Paud
Road, Kothrud,
Pune 411038

HYDERABAD

PI no:59, 3rd
Floor,Sneha
Nagar Colony,
Street No:-
8, Habsiguda
Hyderabad -
500007

CHENNAI

88-A (1st
floor), 6th Avenue ,
Ashok Nagar
(Behind Sony
Centre),
Chennai-600083

AHMEDABAD

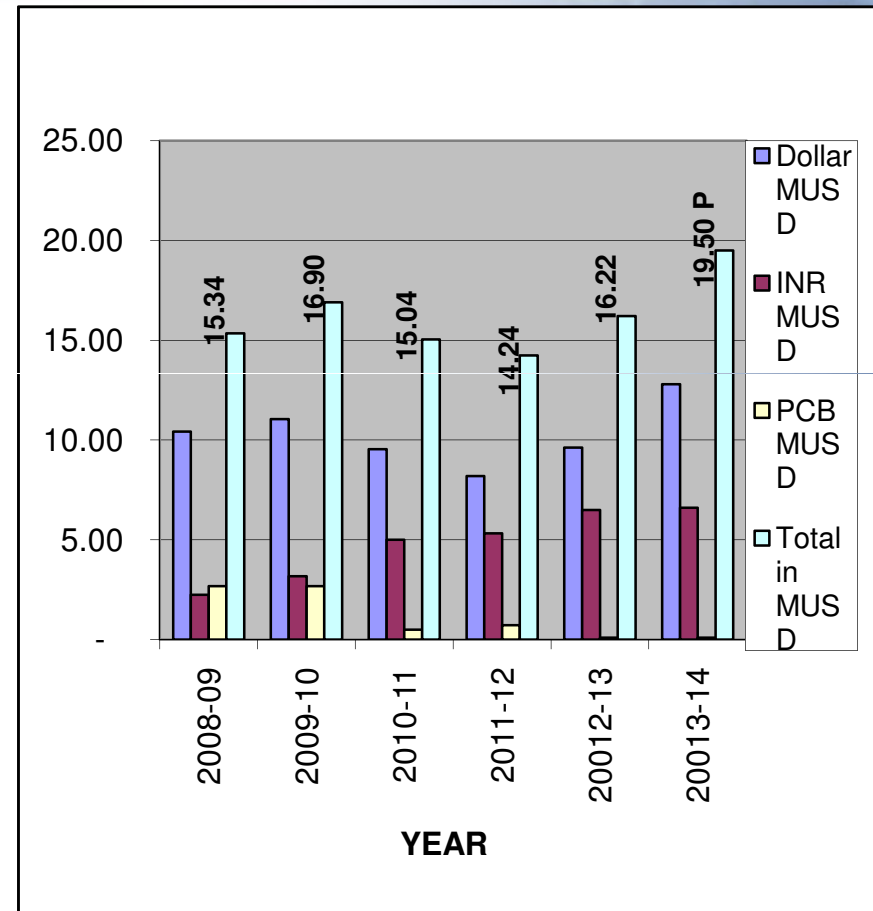
#412, Anand Milan
complex, Navarang
pura, Ahmedabad

Financial

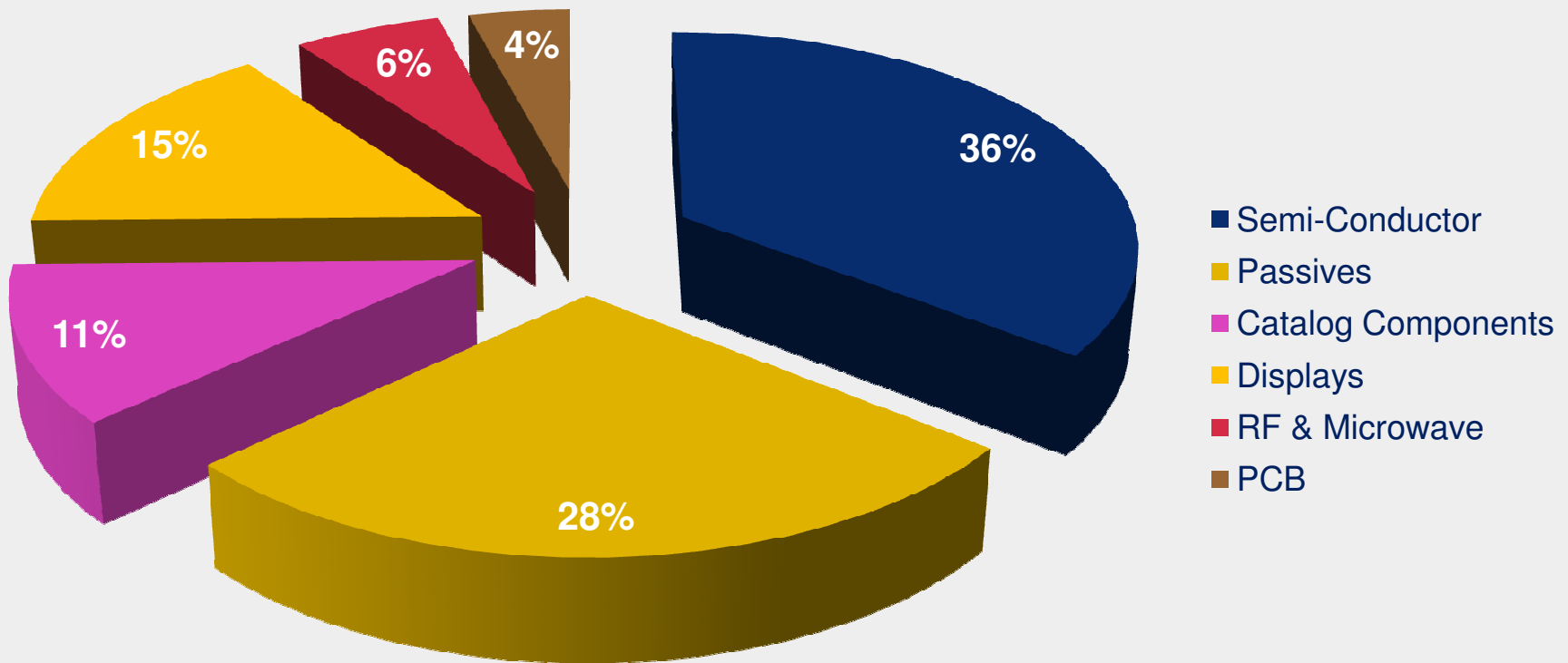
Capital investment

Rs 350,00,000

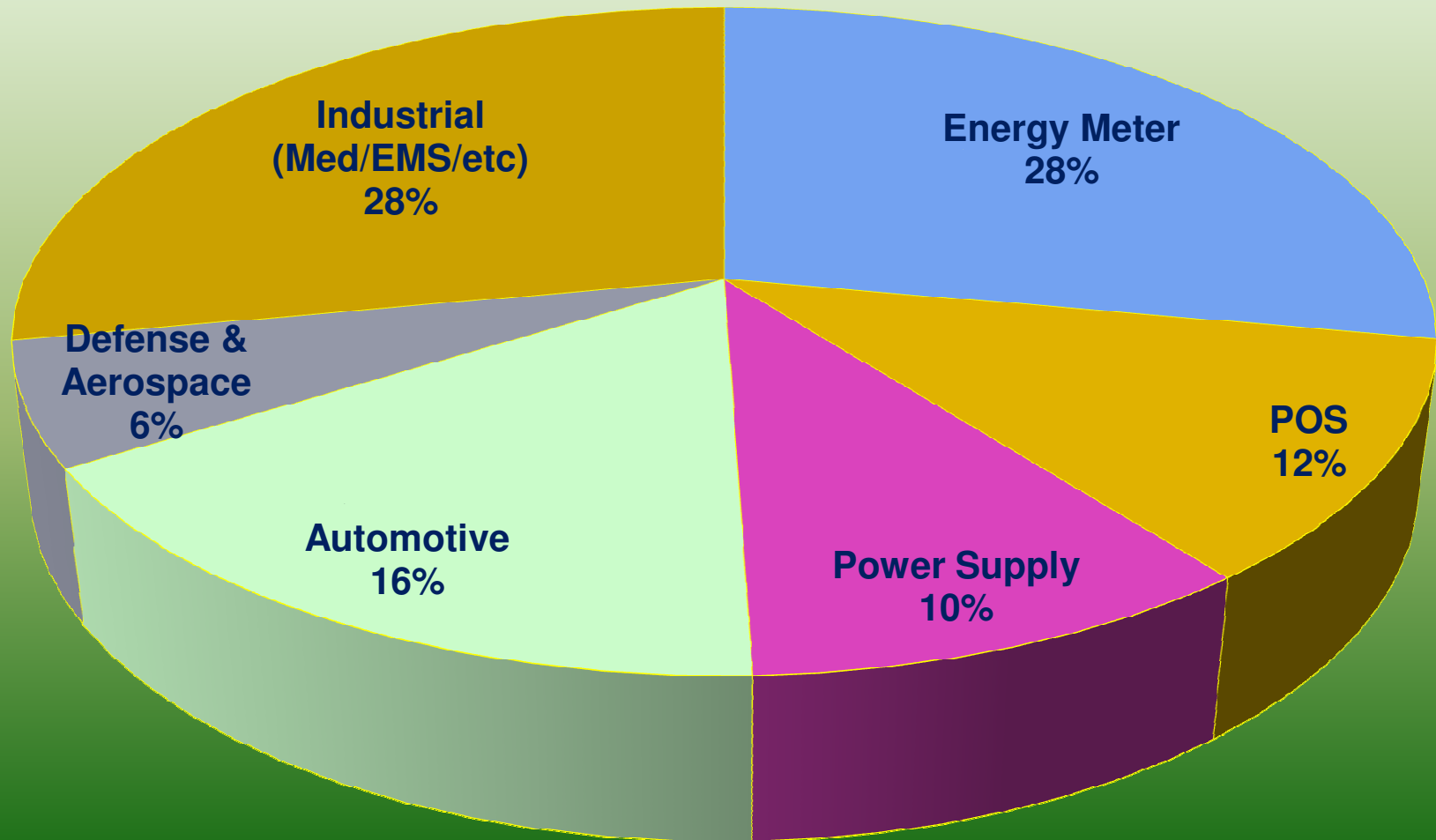
**Year of establishment
1990**



OUR BUSINESS – PRODUCT SEGMENTS



Our Business – Market Segments



Our ACCOLADES

- **“Best Support in VA/VE Award” FY 2009-2010** by Minda Stoneridge.
- **“Best Quality supplier award for less than 100 PPM “ FY 2009-2010** by Minda Stoneridge
- **“Distributor D-IN Achiever Award for 2011”** by Renesas for special products.
Distributor D-IN Achiever Award for 2010” by Renesas for special products & MCU
- **“Distribution Excellence Award 2009”** by Renesas in recognition of DWIN Achievement for MCU.
- **“Distribution Excellence Award 2009”** by Renesas in recognition of DWIN Achievement for MCU.
- **“Distributor D-IN Achiever Award for 2009”** by Renesas for special products & MCU.
- Renesas has recognized SMET as its **CORE DISTY** in view of offering Referral Solutions.

Major Lines

- Renesas
- Hitachi Power Devices
- Cosel
- Panasonic
- Fujitsu
- Rohm
- TDK
- Epson
- OnSemi
- Skyworks
- Yageo- Phycomp
- Futaba
- Mtron PTI, Tianma
- Tianma
- Mouser Electronics
- AOS
- TT Electronics-IRC/ Welwyn /BI
- Micronetics
- TSC/ Goodark
- Meena Circuits(PCB)

SMET Strengths & Activities

- Well structured organization in tune with current technologies
- Market Development, Product promotion, Pre sales support & Sales activities
- Thorough Knowledge of key customers design & Production activities
- We score over other companies by providing Value Addition: Referral solutions, technical support, sample support; Nationwide Presence; International Operations; Logistics; Financial Management
- Total support (Concept to End Product) PCB-Passives to Semi-conductor to Connector to MCU to PCB

SMET Strengths and Activities

- Strive to support customer with quality parts at best prices, work out component equivalents from latest technologies to reduce the total BOM cost.
- Work closely with customers in planning for timely deliveries
- JIT Deliveries; Customer's Inventory Management at our Warehouses (India & Singapore) there by minimizing Inventory at customer location, Flexible terms to suit customer requirements
- SMET has been Winning & Retaining Customers mainly because of its vast component line items and support service

Our Market Segments

- Energy Meter
- UHF RFID solutions
- VTS
- Industrial Automation
- Power Supply
- POS/Hand Held Terminals
- Automotive
- Medical
- Defense & Aerospace
- EMS Manufacturers
- Tele-Communications

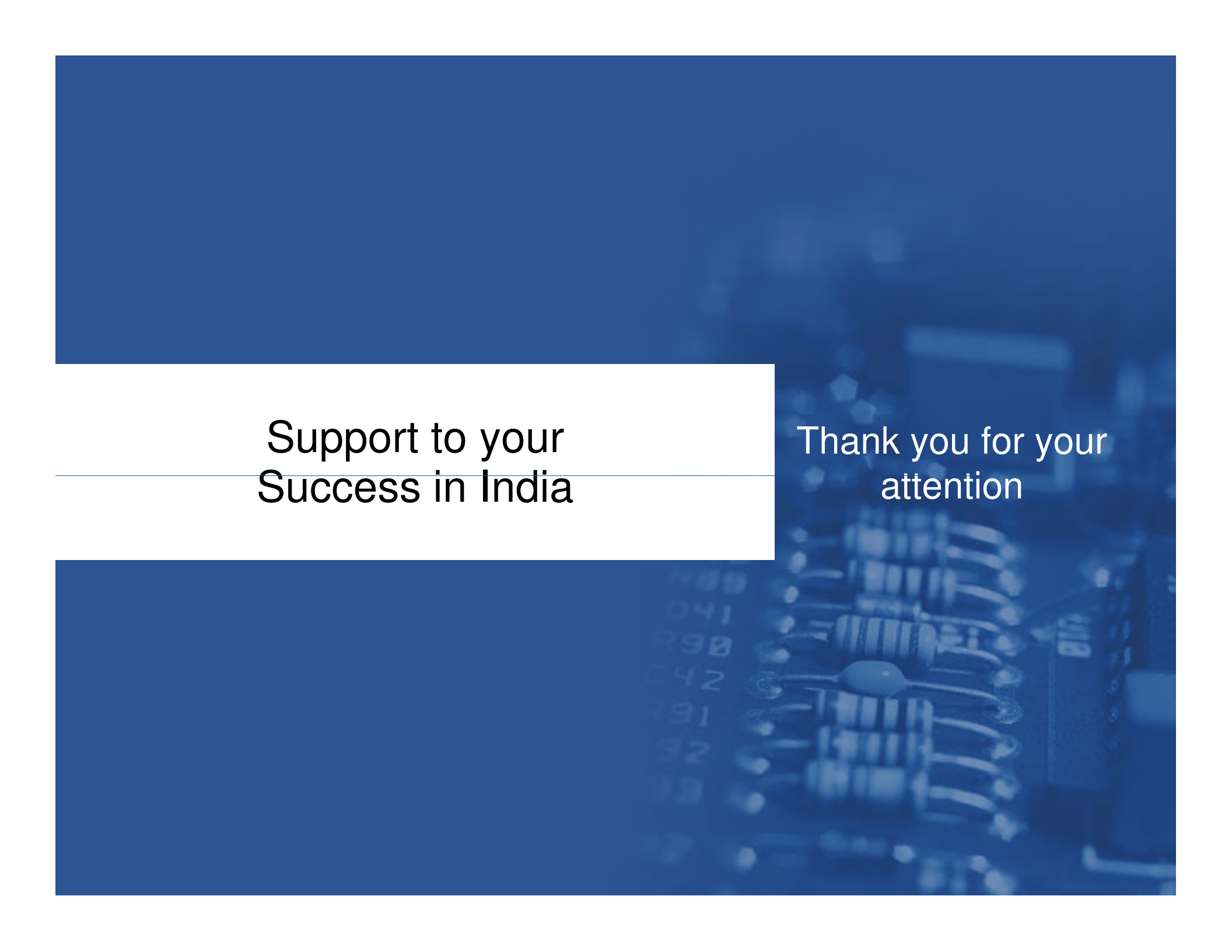
Technology Support

- Full fledge Labs at Bangalore and Delhi to support customers on latest technologies and products
- Dedicated Soldering person, Lab technicians and PCB routing persons
- Bangalore and Delhi labs take up full design ownership of customers

Technology Support

Our Design Capabilities:

- Wireless (Zigbee, GSM/GPRS, GPS & Wi-Fi)
- Automotive Dash Board clusters
- TFT/LCD Interface solutions
- Power Monitoring & Control
- Handheld system
- Power Supply &
- LED Lighting solution
- Thermal Printer solution
- Display solution
- RFID Solutions



Support to your
Success in India

Thank you for your
attention